

BEST
MT. FUJI
PASS!

JR RAIL PASS FOR CENTRAL JAPAN!!

Easy &
Great Deal!

Take a tour around the Shizuoka and Hamamatsu areas,
Japan's treasure trove of hot springs and sea food, on your way to the World Heritage site of Mt. Fuji!

Unlimited rides on JR local trains, buses, ferry and private railway along the route!

Mt. Fuji- Shizuoka Area Tourist Pass Mini

Valid for 3 consecutive days

Adults **¥4,570** Children **¥2,280**

Purchasing in Japan Adults:¥5,080 Children:¥2,540 Children: 6 to 11 years of age



Hamamatsu Flower Park 7
© Hamamatsu and Lake Hamana Tourism Bureau (around April)

Hamamatsu Castle 6
(around April)

Mishima Skywalk 3

Suruga Bay Ferry 1

Hamamatsu / Lake Hamana

Kanzanji Onsen 8

Front Side View of Mt. Fuji

Miho-no-Matsubara 5

Fujisan Hongu Sengentaisha 4
(around April)

Shiraito no Taki Water Fall 2
(around November)

• Out of the routes useable with the pass, the blue lines show JR conventional lines, while other colored lines show other means of transportation.
• You can exchange MCO (bought outside of Japan) and purchase passes at designated counters at stations with the ● mark along the route.
• You can also exchange MCO and purchase passes at designated counters of JR Central's major stations (Tokyo, Shinagawa, Shin-Yokohama, Nagoya, Kyoto, Shin-Osaka, etc.)



Where to buy and for more information

<https://touristpass.jp>



JR
JR-CENTRAL
2019.10

Mt. Fuji-Shizuoka Area Tourist Pass *Mini*

Valid for 3 consecutive days Adults ¥4,570 Children ¥2,280

Just one pass gives you unlimited access to the safety, comfort, speed and reliability of JR's conventional lines and limited-express trains, as well as convenient buses to major sightseeing spots and the Suruga Port Ferry!

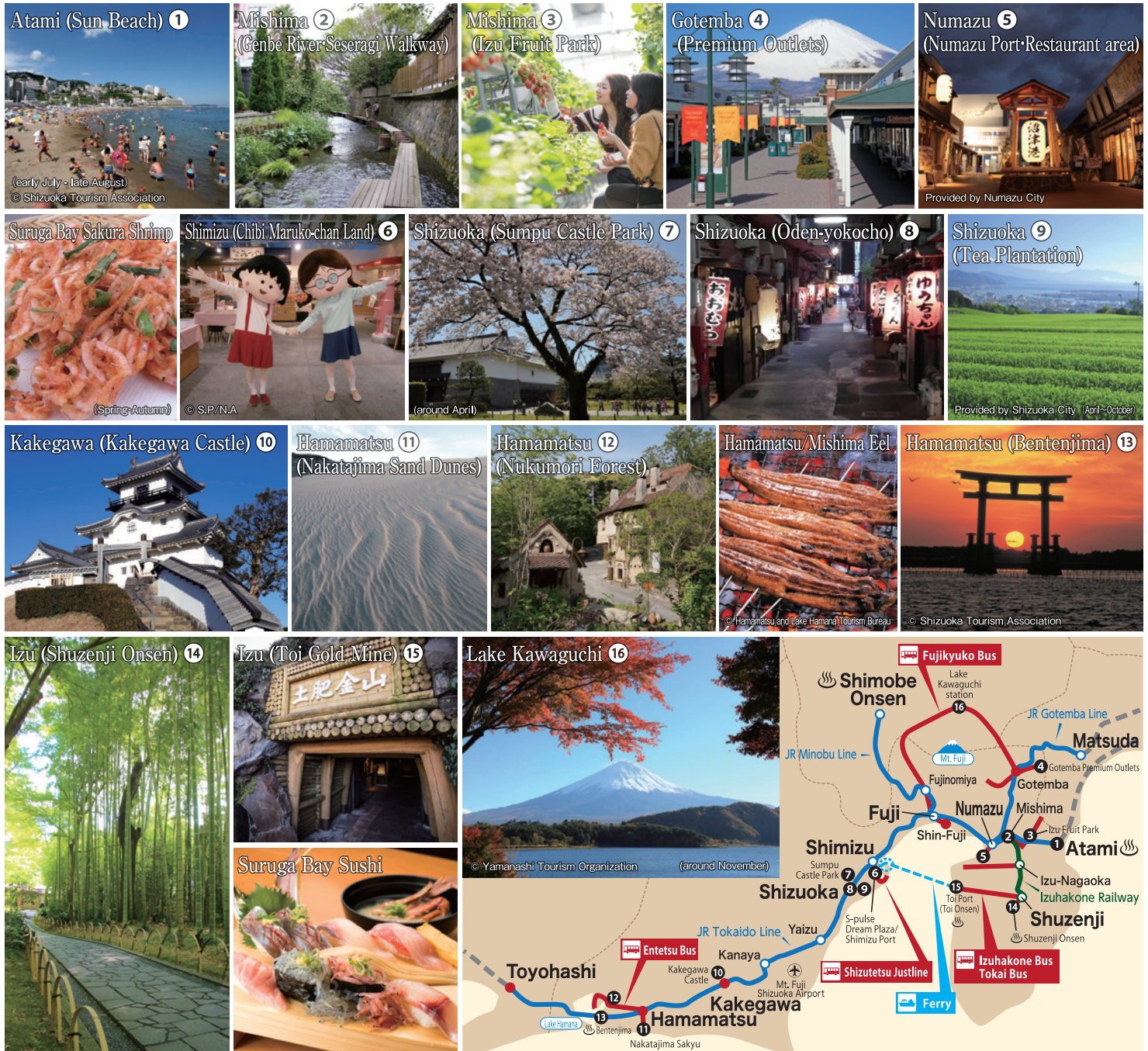


Image of usable routes of JR train, buses etc. and sightseeing spots. Separate admission and access fees to the attraction shown in the diagram may be required.

✓ **Unlimited rides on non-reserved seats on limited express, rapid and ordinary trains of JR conventional lines!**
Each transportation facility may change its holidays and operating hours without notice. Please see the website of each facility for more information.

Examples of travel time (Using JR limited express Using JR non-limited express)

- Atami~Mishima/Numazu...about 15min (**JR**)
- Mishima/Numazu~Fuji...about 40min (**JR**)
- Fuji~Shizuoka...about 35min (**JR**)
- Shizuoka~Hamamatsu...about 1h 15min (**JR**)
- Hamamatsu~Toyohashi...about 30min (**JR**)
- Numazu~Gotemba...about 30min (**JR**)
- Gotemba~Matsuda...about 40min (**JR**)
- Fuji~Shimobe Onsen...about 1h 10min (**JR**)
- Mishima~Shuzenji...about 35min (Izu Hakone Railway)
- Mishima~Mishima Skywalk...about 25min (Bus)
- Shimizu~Miho-no-Matsubara...about 25min (Bus)
- Numazu~Numazu Port...about 15min (Bus)
- Gotemba~Gotemba Premium Outlets...about 15min (Bus)
- Shuzenji~Shuzenji Onsen...about 10min (Bus)
- Shuzenji~Toi Port...about 55min (Bus)
- Shin-Fuji~Fujisan station...about 2h 15min (Bus)
- Gotemba~Lake Kawaguchi (station)...about 1h 45min (Bus)
- Hamamatsu~Nakatajima Sakyu...about 15min (Bus)
- Hamamatsu~Hamanako Garden Park...about 1h (Bus)

You are required a passport with a "Temporary Visitor" stamp/sticker given during entry to Japan in order to redeem an MCO (exchange order) for this product purchased outside of Japan, or to purchase this product within Japan. (Please also be aware that the price of the product differs for purchases made outside of Japan and purchases made within Japan.)

Other JR Tourist Passes

Takayama-Hokuriku Area
Tourist Pass



Ise-Kumano-Wakayama Area
Tourist Pass



For more information <https://touristpass.jp>

Alpine-Takayama-Matsumoto Area
Tourist Pass



National Parks of Japan
Official Partner